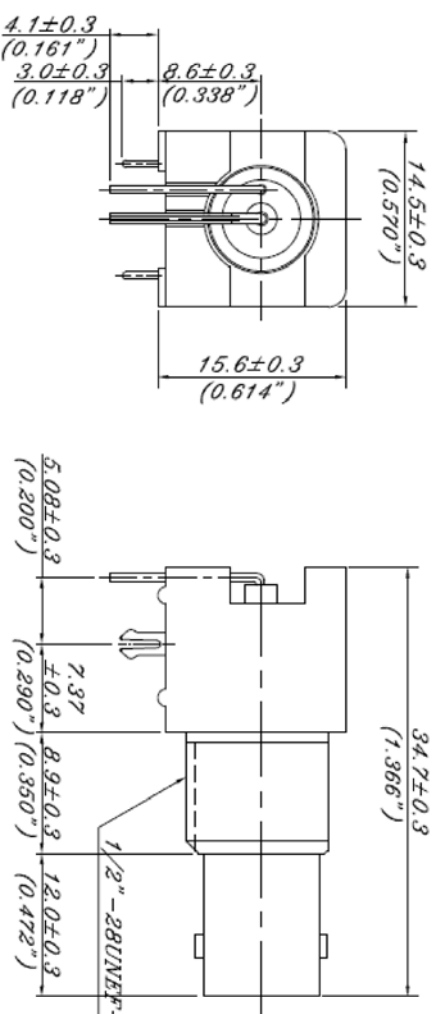


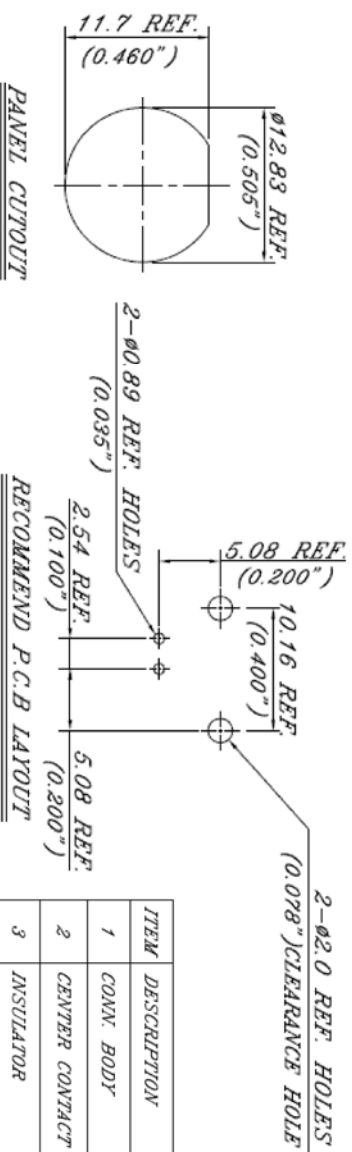
REV	ECO NO.	DATE	BY	APP'D
A	Lock washer material changed PER ECO 000	2/5/14	KL	



**SPECIFICATIONS:**  
**MECHANICAL CHARACTERISTICS:**  
 MATING/UNMATING--500 CYCLES

**ELECTRICAL CHARACTERISTICS:**  
 NORMAL IMPEDANCE-- 50 OHMS  
 FREQUENCY RANGE-- 0-1 GHz  
 OPERATING VOLTAGE-- 500 VOLTS RMS  
 CONTACT RESISTANCE-- 3.0 MILLIOHMS MAX (GOLD)  
 DIELECTRIC WITHSTANDING VOLTAGE-- 1500 VOLTS RMS  
 INSULATION RESISTANCE-- 5000 MEGOHMS MIN.

**ENVIRONMENTAL CHARACTERISTICS:**  
 TEMPERATURE RANGE-- -65°C TO 165°C



ITEM	DESCRIPTION	MATERIAL & TREATMENT
1	CONN. BODY	NICKEL PLATING OVER ZINC ALLOY.
2	CENTER CONTACT	PHOSPHORUS BRONZE WITH GOLD PLATING AT CONTACT AREA TIN PLATING AT TAIL.
3	INSULATOR	POLYPROPYLENE UL 94V-0
4	HOUSING	PBT+15%GF. UL 94V-0
5	MOUNTING HOOK	TIN PLATING OVER BRASS.
6	GROUNDING TERMINAL	TIN PLATING OVER STRIP COPPER.

CONFIDENTIAL



© Copyright 2014 Regal Electronics, Inc.  
 This drawing is the property of Regal Electronics and contains confidential information, trade secret information and/or know-how which is the property of Regal Electronics. By accepting this drawing, the recipient agrees not to provide, or otherwise make available, the drawing or any information or know-how embodied therein, to any third party without prior written authorization.

DRAWN: KIM	DATE: 2/5/14	TITLE: BNC Right Angle Plastic Connector
CHECKED:	DATE:	SIZE: B
ENGINEER:	DATE:	DRAWING NO. BNC31201-HW-50R
APPROVED:	DATE:	SCALE: NONE
APPROVED:	DATE:	SHEET 1 OF 1

UNIT: mm(inch)