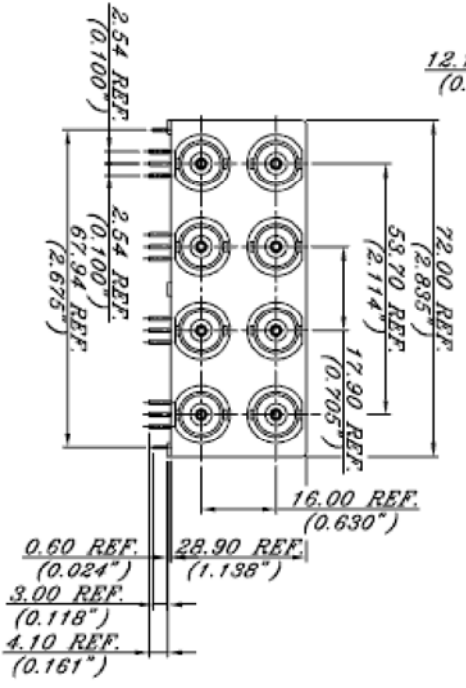
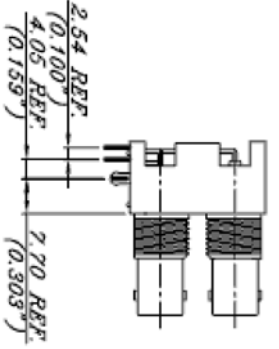
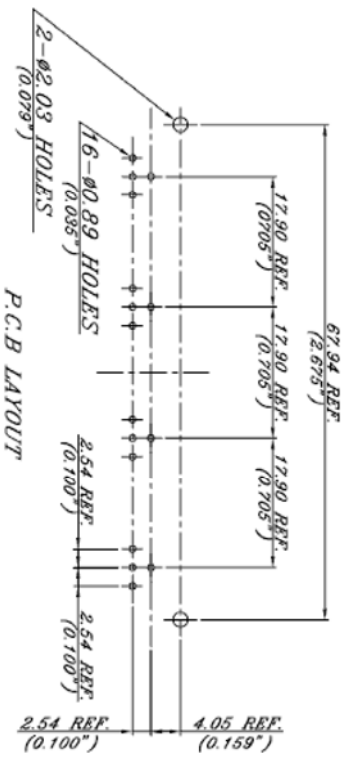
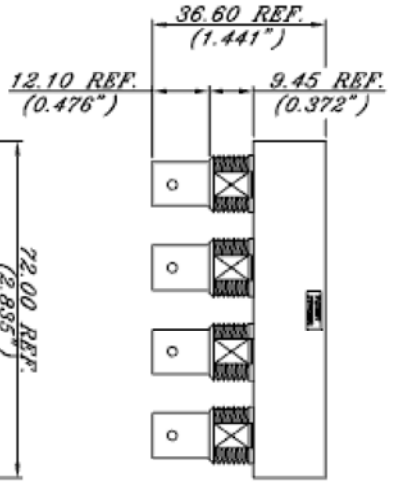
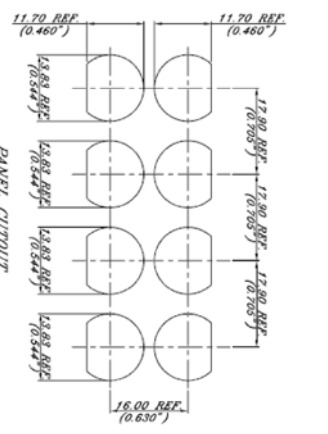


ROHS COMPLIANT

REV	ECO NO.	DATE	BY	APP'D
A	REL TO PRODUCTION PER ECO 001	7/06/12	KL	



SPECIFICATIONS:

MECHANICAL CHARACTERISTICS:
MATING/UNMATING-500 CYCLES.

ELECTRICAL CHARACTERISTICS:
NOMINAL IMPEDANCE-75 OHMS.
FREQUENCY RANGE-0~1 GHz
OPERATING VOLTAGE-500 VOLTS RMS.
CONTACT RESISTANCE-3.0 MILLIOHMS MAX.(GOLD)
DIELECTRIC WITHSTANDING VOLTAGE- 1500 VOLTS RMS.
INSULATION RESISTANCE-5000 MEGOHMS MIN.

ENVIRONMENTAL CHARACTERISTICS:
TEMPERATURE RANGE- -65°C TO +165°C.
THERMAL SHOCK-MIL-STD-202, METHOD 107 COND.B.
PHYSICAL SHOCK-MIL-STD-202, METHOD 204, COND.B.

Tolerance	±0.25
.xx	±0.13
.xxx	±1°
ang.	±1°

UNIT: mm(inches)

CONFIDENTIAL



© Copyright 2012 Regal Electronics, Inc. This drawing is the property of Regal Electronics and contains confidential information, trade secret information and/or know-how which is the property of Regal Electronics. By accepting this drawing, the recipient agrees not to provide, or otherwise make available, the drawing or any information or know-how embodied therein, to any third party without prior written authorization.

DESCRIPTION	MATERIAL & TREATMENT
HOUSING	PBT+30%G.F.
THREAD HOUSING	PBT+30%G.F.
CONN. BODY	NICKEL PLATING OVER ZINC ALLOY
CENTER CONTACT	PHOSPHORUS BRONZE WITH GOLD PLATING AT CONTACT AREA TIN PLATING AT TAIL & NICKEL PLATING OVERALL.
INSULATOR	POLYPROPYLENE (UL 94HB.)
GROUNDING TERMINAL	TIN PLATING OVER COPPER WIRE.
MOUNTING HOOK	TIN PLATING OVER BRASS.

DRAWN: KJM	DATE: 7/06/12	TITLE: 2x4 Port Plastic BNC R/A Connector
CHECKED:	DATE:	
ENGINEER:	DATE:	
APPROVED:	DATE:	
APPROVED:	DATE:	
APPROVED:	DATE:	
SCALE: NONE	DRAWING NO. BNC31208-HW-75R	REV A
SHEET 1 OF 1		

5 4 3 2 1

C-BNC31208-HW-75R