

ROHS COMPLIANT

REV	ECO NO.	DATE	BY	APP'D
A	REL TO PRODUCTION PER ECO 001	12/13/16	KL	

DWG NO. R152STR-8-1

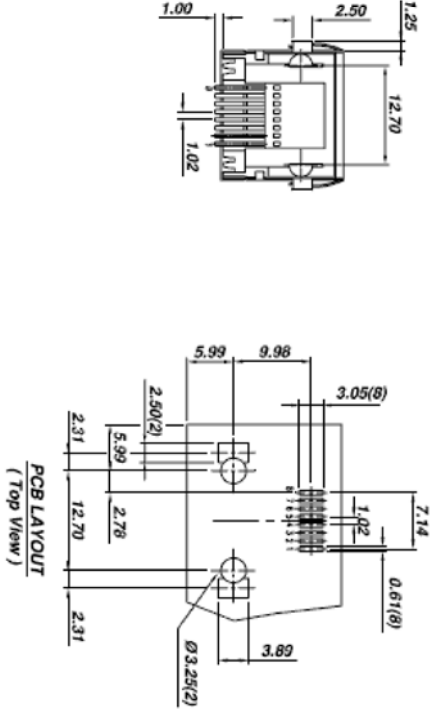
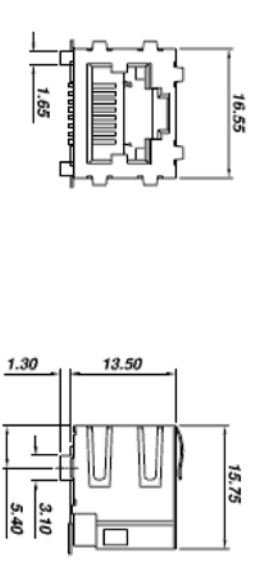
SPECIFICATION :

1. Electrical Char.

- Insulation Resistance : 500M-Ohm Min. 500V DC. for 1 minute.
- Contact Resistance : 30milli-Ohm Max.
- Rating Current : 1.5A Max.
- Rating Voltage : 150V AC.
- Dielectric Voltage : 1,000 Vrms at 1MA 60 Sec. Min.

2. Physical char.

- Housing : Nylon (UL 94V-0),Soldering Temperature:260°C for 5 Sec.
- Color : Black Color
- Spring Wire :
0.35mm Thickness Phosphor bronze 6u" Gold Plating Over Nickel
- Shielded : Brass Plating Nickel
- Temperature Range : - 40°C / +85°C
- Durability : 750 Mating cycles Min.



Tolerance	
.xx	±0.25
.xxx	±0.13
ang.	±1°

UNIT: mm

CONFIDENTIAL



© Copyright 2016 Regal Electronics, Inc.

This drawing is the property of Regal Electronics and contains confidential information, trade secret information and/or know-how which is the property of Regal Electronics. By accepting this drawing, the recipient agrees not to provide, or otherwise make available, the drawing or any information or know-how embodied therein, to any third party without prior written authorization.

DRAWN: KIM	DATE: 12/13/16	TITLE: RJ45 SIDE ENTRY SMT JACK	SIZE: B	DRAWING NO. R152STR-8-1	REV: A
CHECKED:	DATE:				
ENGINEER:	DATE:				
APPROVED:	DATE:				
APPROVED:	DATE:				
APPROVED:	DATE:				
SCALE: NONE					

5 4 3 2 1

5 4 3 2 1