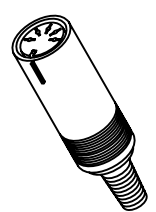
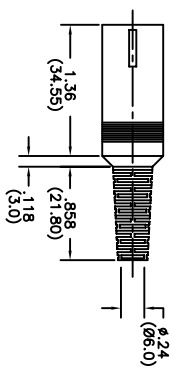
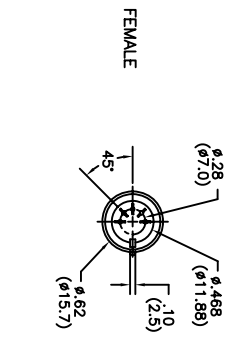


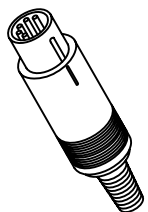
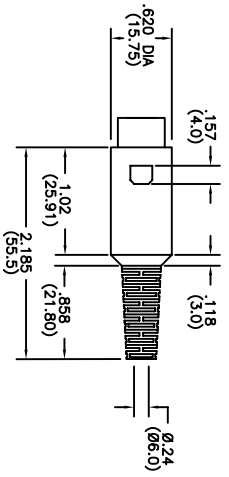
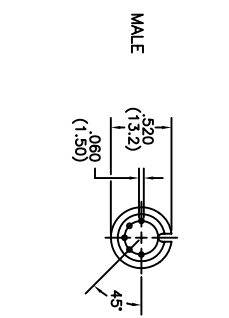
ROHS COMPLIANT

REV	ECO NO.	DATE	BY	APP'D
A	REL TO PRODUCTION PER ECO 001	12/10/08	KL	

5 4 3 2 1 DWG NO. R4030-SERIES



FEMALE	
3-PIN 180°	4-PIN 210°
5-PIN 180°	6-PIN 240°
7-PIN 270°	8-PIN 270°



MALE	
3-PIN 180°	4-PIN 210°
5-PIN 180°	6-PIN 240°
7-PIN 270°	8-PIN 270°

R4030 - (contacts) (gender)  
 Contacts: 3, 4, 5, 6, 7, 8, 9  
 Gender: M = Male; F = Female

Tolerance	±0.25
.xx	±0.13
.xxx	±1°
ang.	

UNIT: mm

CONFIDENTIAL



© Copyright 2008 Regal Electronics, Inc.  
 This drawing is the property of Regal Electronics and contains confidential information, trade secret information and/or know-how which is the property of Regal Electronics. By accepting this drawing, the recipient agrees not to provide, or otherwise make available, the drawing or any information or know-how embodied therein, to any third party without prior written authorization.

TITLE: STANDARD DIN  
 CABLE ASSEMBLY TYPE

MATERIAL/FINISH:  
 METAL SHELL: BRASS  
 CONTACT MATERIAL: PLUG-BRASS, RECEPTABLE-PHOSPHOR/BRONZE  
 CONTACT PLATING: TIN  
 MOLD-IN COVER: TINNED/BRASS  
 INSULATOR: PBT OR NYLON + 30% FIBRE REINFORCE (UL 94 V-0)  
 COVER: A.B.S.  
 STRAIN RELIEF CAP: PVC

ELECTRICAL:  
 TEMPERATURE RANGE: -25°C TO +85°C  
 APPLICABLE WIRES: 20AWG  
 CURRENT RATING: 1A AC/DC  
 INSULATION RESISTANCE: 100MΩ MIN  
 VOLTAGE RATING: 50V AC/DC  
 WITHSTANDING VOLTAGE: 500V AC FOR 1 MINUTE

DRAWN: KIM	DATE 12/10/08	TITLE	SCALE	SHEET
CHECKED:	DATE	STANDARD DIN CABLE ASSEMBLY TYPE	NONE	1 of 1
ENGINEER:	DATE			
APPROVED:	DATE			
APPROVED:	DATE	SIZE	DRAWING NO.	REV
APPROVED:	DATE	B	R4030-SERIES	A

5 4 3 2 1