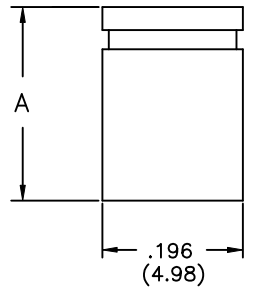
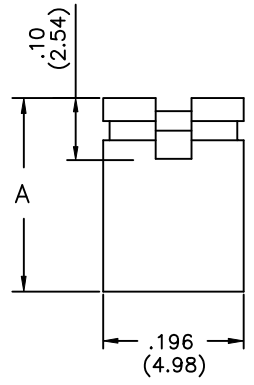


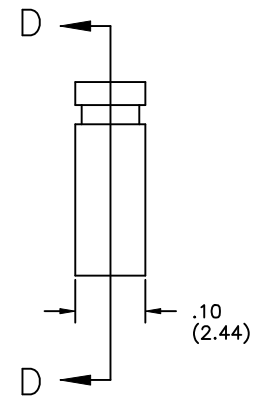
REV	ECO NO.	DATE	BY	APP'D
A	INITIAL DRAWING PER ECO 001	4/25/06	KL	



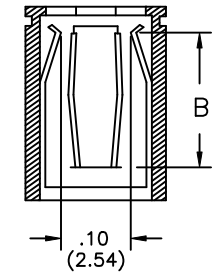
Type A



Type B



SECTION D-D



CONTACT POINT

Height	8mm Size 8.0mm	6mm Size 6.0mm
A	.315 (8.00)	.236 (6.00)
B	.22 (5.6)	.15 (3.81)

DUAL TUNING FORK CONTACT FOR HIGH RELIABILITY
 MATES WITH .025 SQ. POST
 CONTACTS: PHOSPHOR BRONZE GOLD PLATED
 INSULATOR: PBT GLASS-FILLED
 COLOR: BLACK UL 94 V-0
 CURRENT 3 A, VOLTAGE 300 V DC
 TEMPERATURE: -55°C + 105°C
 IR = 100 MEGOHMS MIN.
 CR = 20 MILLIOHM MAX.

4051 - (type) + (height)
 Type A = closed
 Type B = open

Tolerance	
.x	±0.35
.xx	±0.25

UNIT: mm

CONFIDENTIAL



RoHS compliant

© Copyright 2006 Regal Electronics, Inc.
 This drawing is the property of Regal Electronics and contains confidential information, trade secret information and/or know-how which is the property of Regal Electronics. By accepting this drawing, the recipient agrees not to provide, or otherwise make available, the drawing or any information or know-how embodied therein, to any third party without prior written authorization.

DRAWN: KIM	DATE 4/25/06
CHECKED:	DATE
ENGINEER:	DATE
APPROVED:	DATE
APPROVED:	DATE
APPROVED:	DATE

TITLE: 0.100" MINI JUMPERS		
SIZE B	DRAWING NO. R4051-SERIES	REV A
SCALE: NONE	SHEET 1 OF 1	