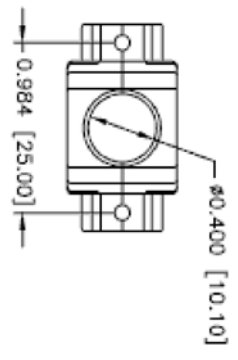


ROHS COMPLIANT

REV	ECO NO.	DATE	BY	APP'D
A	REL TO PRODUCTION PER ECO 001	8/10/06	KL	

5 4 3 2 1 DWG NO. R4102-09

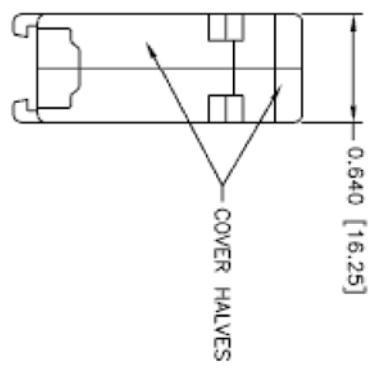
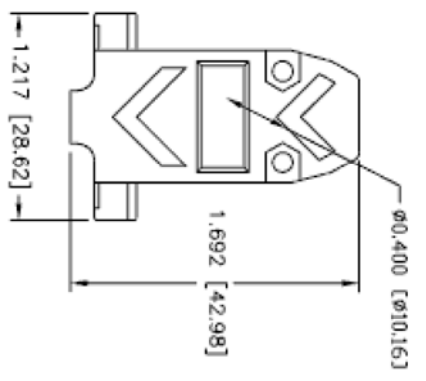


#4-40 X 7/16" FILLISTER HEAD MACHINE SCREW
 MATERIAL - STEEL
 FINISH - BRIGHT ZINC (HEXAVALENT CHROMIUM FREE)
 QTY: 2 EACH

#4-40 #2 BLANK HEX NUT
 MATERIAL - STEEL
 FINISH - BRIGHT ZINC (HEXAVALENT CHROMIUM FREE)
 QTY: 2 EACH

#4-40 X 1/2" FILLISTER HEAD CAPTIVE SCREW
 MATERIAL - STEEL
 FINISH - BRIGHT ZINC (HEXAVALENT CHROMIUM FREE)
 QTY: 2 EACH

#4 SADDLE WASHER
 MATERIAL - STEEL
 FINISH - BRIGHT ZINC (HEXAVALENT CHROMIUM FREE)
 QTY: 2 EACH



- CONNECTOR COVER:
1. MATERIAL: ABS COMPOUND - UL94HB
 2. FINISH: NICKEL PLATING
 3. DIMENSIONS: INCHES [MM]
 4. TOLERANCE: ± 0.015 [0.381]

CONFIDENTIAL

© Copyright 2006 Regal Electronics, Inc.
 This drawing is the property of Regal Electronics and contains confidential information, trade secret information and/or know-how which is the property of Regal Electronics. By accepting this drawing, the recipient agrees not to provide, or otherwise make available, the drawing or any information or know-how embodied therein, to any third party without prior written authorization.

DRAWN: KIM	DATE: 8/10/06	TITLE: D-SUB BACKSHELL METALIZED PLASTIC COVER
CHECKED:	DATE:	SCALE: NONE
ENGINEER:	DATE:	SIZE: B
APPROVED:	DATE:	DRAWING NO. R4102-09
APPROVED:	DATE:	REV: A
APPROVED:	DATE:	SHEET 1 of 1



5 4 3 2 1