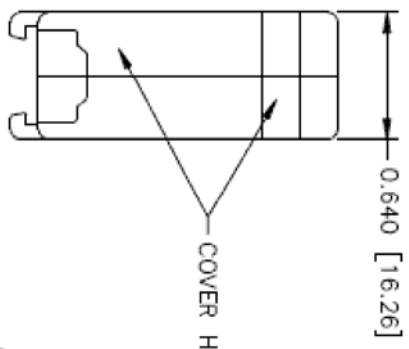
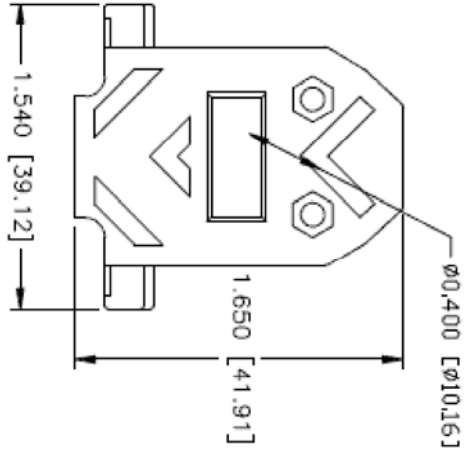
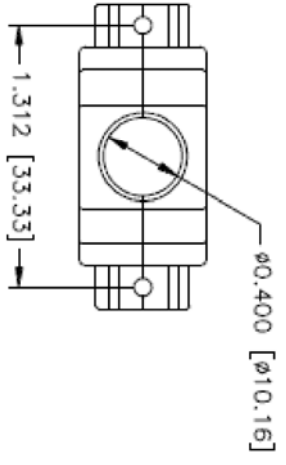


ROHS COMPLIANT

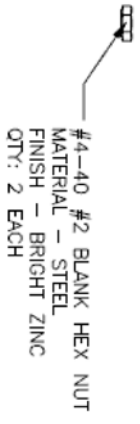


COVER HALVES

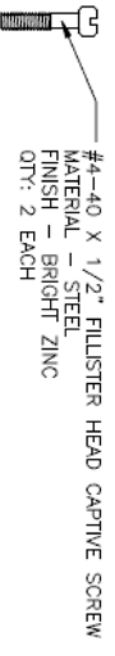
- CONNECTOR COVER:
- 1. MATERIAL: ABS COMPOUND - UL94HB
 - 2. FINISH: NICKEL PLATING PER NTC SPECIFICATION N/T 000500
 - 3. DIMENSIONS: INCHES [MM]
 - 4. TOLERANCE: ±0.015 [0.381]



#4-40 X 7/16" FILLISTER HEAD MACHINE SCREW
MATERIAL - STEEL
FINISH - BRIGHT ZINC
QTY: 2 EACH



#4-40 #2 BLANK HEX NUT
MATERIAL - STEEL
FINISH - BRIGHT ZINC
QTY: 2 EACH



#4-40 X 1/2" FILLISTER HEAD CAPTIVE SCREW
MATERIAL - STEEL
FINISH - BRIGHT ZINC
QTY: 2 EACH



#4 SADDLE WASHER
MATERIAL - STEEL
FINISH - BRIGHT ZINC
QTY: 2 EACH

CONFIDENTIAL

© Copyright 2015 Regal Electronics, Inc.
This drawing is the property of Regal Electronics and contains confidential information, trade secret information and/or know-how which is the property of Regal Electronics. By accepting this drawing, the recipient agrees not to provide, or otherwise make available, the drawing or any information or know-how embodied therein, to any third party without prior written authorization.

REV	ECO NO.	DATE	BY	APP'D
A	REL TO PRODUCTION PER ECO 001	1/20/15	KL	

DRAWN: KIM	DATE: 1/20/15	TITLE: D-SUB CONNECTOR BACKSHELL 15P
CHECKED:	DATE:	
ENGINEER:	DATE:	
APPROVED:	DATE:	
APPROVED:	DATE:	
APPROVED:	DATE:	
SCALE: NONE	DRAWING NO. R4102-15	REV A
		SHEET 1 OF 1



5 4 3 2 1

5 4 3 2 1