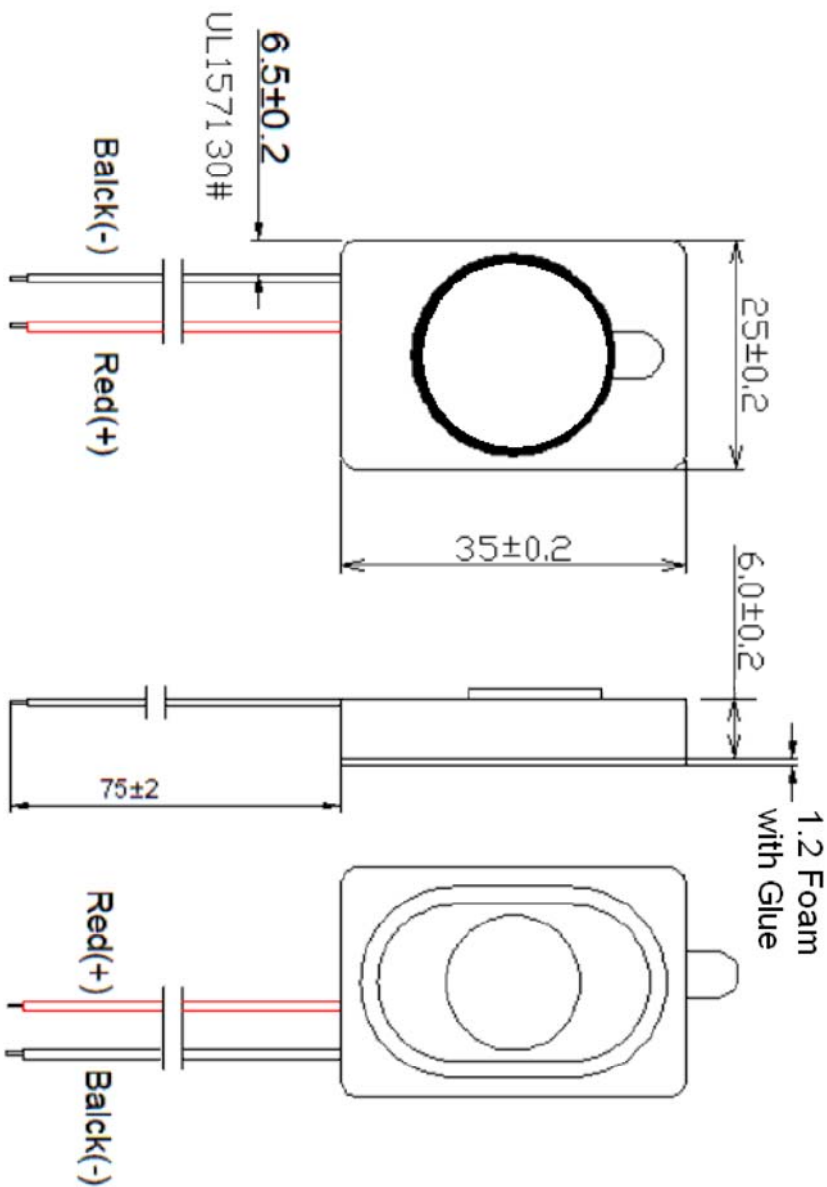


RoHS Compliant

REV	ECO NO.	DATE	BY	APP'D
A	REL TO PRODUCTION PER ECO 001	8/9/19	KL	



SPECIFICATIONS:

- Rated Impedance: 8 Ohms  $\pm 15\%$
- Rated Power: 1.5W Max. 2.0W
- Resonant Frequency: 800  $\pm 20\%$
- Effective Freq. Range: fo - 20kHz
- SPL (at 0.1w, 0.1m) 91.8  $\pm 3$ dB
- Operating Temp.:  $-20^\circ\text{C} \sim +60^\circ\text{C}$

mylar cone  
 Front side rating: IP67 (dust tight / waterproof)  
 Requires mounting in IP67 rated enclosures

Tolerance:  $\pm 0.3\text{mm}$

UNIT: mm

CONFIDENTIAL



HIGH POWER  
 SPEAKER BOX

© Copyright 2019 Regal Electronics, Inc.  
 This drawing is the property of Regal Electronics and contains confidential information, trade secret information and/or know-how which is the property of Regal Electronics. By accepting this drawing, the recipient agrees not to provide, or otherwise make available, the drawing or any information or know-how embodied therein, to any third party without prior written authorization.

DRAWN: KIM	DATE: 8/9/19	TITLE: HIGH POWER SPEAKER BOX
CHECKED:	DATE:	SIZE: B
ENGINEER:	DATE:	DRAWING NO. RHO-2535A-NL67
APPROVED:	DATE:	SCALE: NONE
APPROVED:	DATE:	SHEET 1 of 1

5

4

3

2

1

C - RHO-2535A-NL67